

Designed by Dorothy Cosonas

**Content**

Wool 38%  
Cotton 28%  
Acrylic 28%  
Polyester 6%

**Flame Resistance**

California Technical  
Bulletin 117  
NFPA 260 (UFAC Class 1)  
EN1021 1/2  
British Standard 5852:  
1990 Source 5 (crib 5)

**Lightfastness**

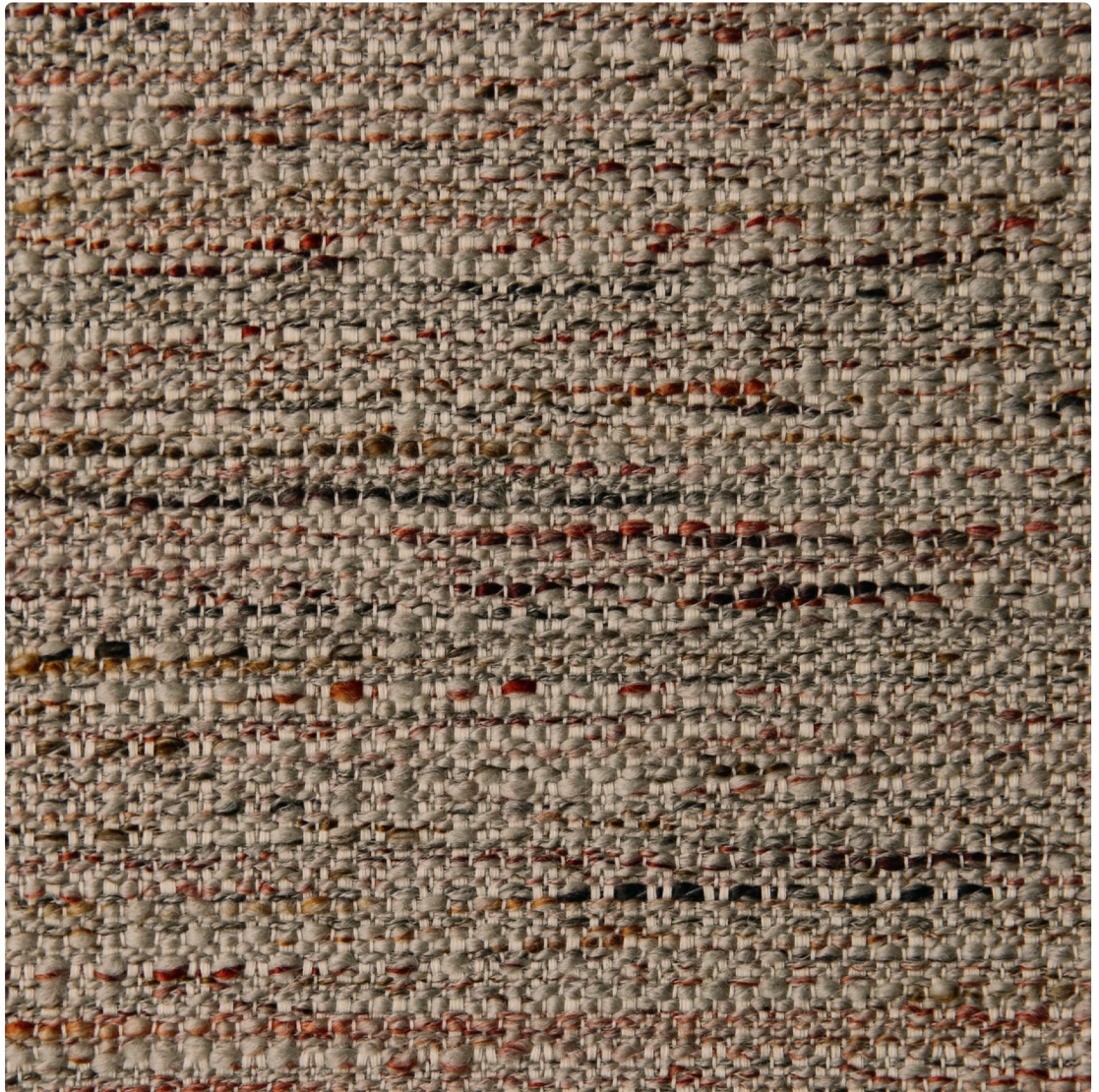
ISO 5

**Abrasion**

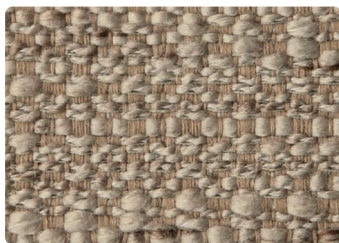
70,000 rubs  
Martindale method

**Maintenance**

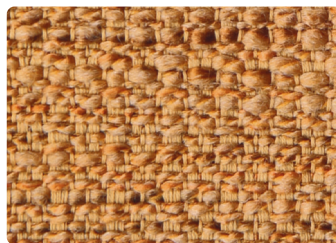
Clean with solvent-based  
cleaning agent



K108010 Orchard



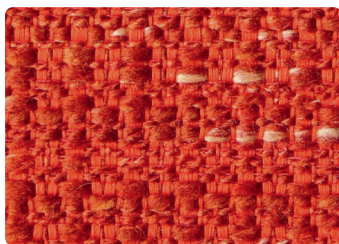
K10808 Parchment



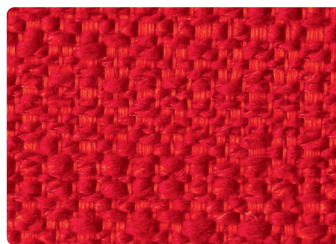
K10801 Sunflower



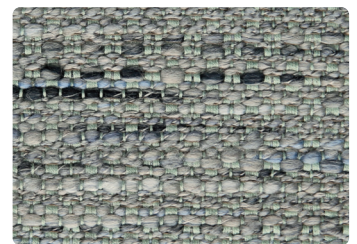
K108011 Lion



K10804 Paprika



K10805 Scarlet



K108013 Dragon

Designed by Dorothy Cosonas

**Content**

Wool 38%  
Cotton 28%  
Acrylic 28%  
Polyester 6%

**Flame Resistance**

California Technical  
Bulletin 117  
NFPA 260 (UFAC Class 1)  
EN1021 1/2  
British Standard 5852:  
1990 Source 5 (crib 5)

**Lightfastness**

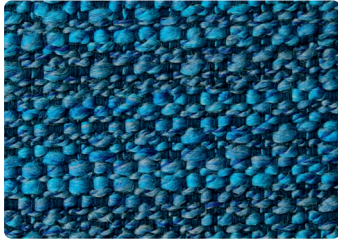
ISO 5

**Abrasion**

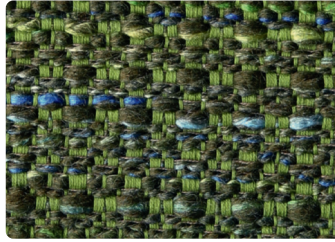
70,000 rubs  
Martindale method

**Maintenance**

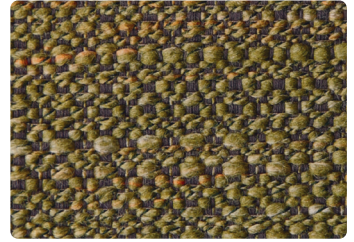
Clean with solvent-based  
cleaning agent



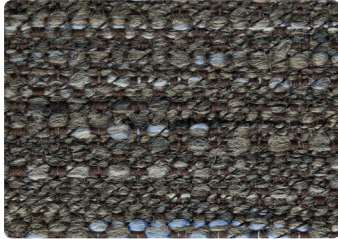
K10802 Sapphire



K108012 Palm



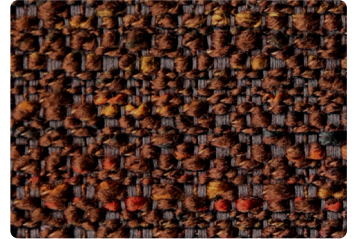
K10803 Spruce



K10809 Ash Gray



K10806 Aubergine



K10807 Bittersweet



K108014 Eclipse