

Content

Cotton 100%

Flame Resistance

California Technical
Bulletin 117
EN1021 1/2
British Standard 5852:
1990 Source 5 (crib 5)

Lightfastness

ISO 4/5

Abrasion

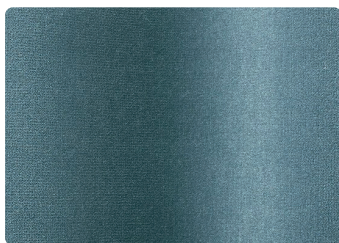
50,000 rubs
Martindale method

Maintenance

Clean with solvent-based
cleaning agent



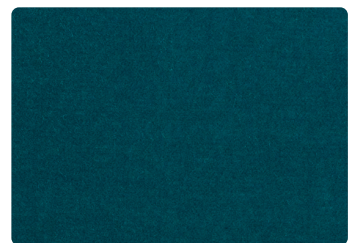
171EVA Avio



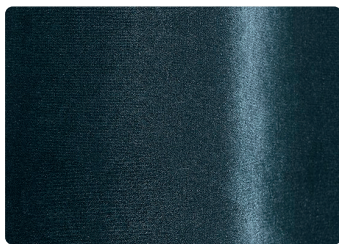
172EVA Steel



140EVA Sea Green



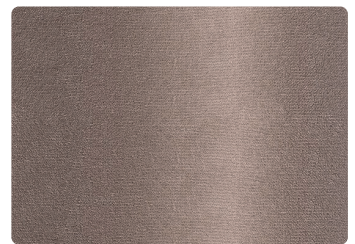
149EVA Ocean



170EVA Night Blue



125EVA Rose



177EVA Beige

Please use this sample card as indicative, only. It is provided as a guide.
There may be variations between this sample card and the real samples.

Content

Cotton 100%

Flame ResistanceCalifornia Technical
Bulletin 117
EN1021 1/2
British Standard 5852:
1990 Source 5 (crib 5)**Lightfastness**

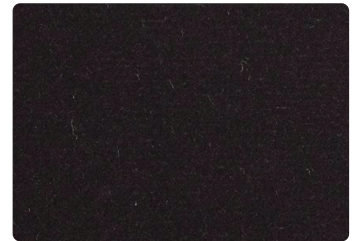
ISO 4/5

Abrasion50,000 rubs
Martindale method**Maintenance**Clean with solvent-based
cleaning agent

131EVA Dune



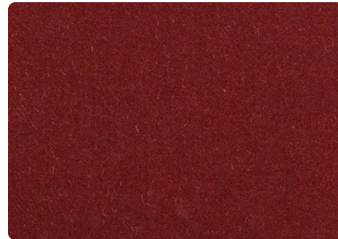
135EVA Clay



134EVA Ebony



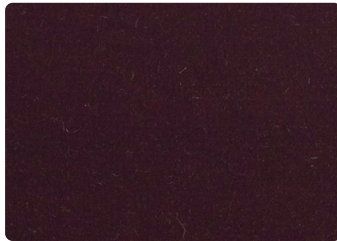
115EVA Saffron



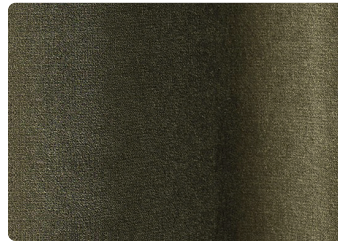
116EVA Cayenne



120EVA Wine



119EVA Plum



168EVA Mousse



145EVA Olive



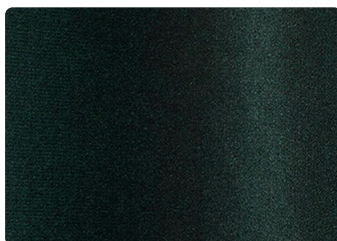
144EVA Bottle Green



109EVA Anise



154EVA Gold



169EVA Cactus



138EVA Black