

**Content**

New wool 95%  
Polyamide 5%

**Flame Resistance**

FAR 25.853 (12 sec. vertical)  
CAL TB 117-2013  
DIN 4102-1 B2  
EN 13501-1  
EN 1021-1 and -2  
BS 5852:2006 (part 1)  
BS 5852:2006 (part 2) Crib 5  
BKZ: 5.3 SN 198898  
UNI 9175 (1 IM)  
IMO: 2014/90/EU/Marine  
Equipment Directive

**Lightfastness**

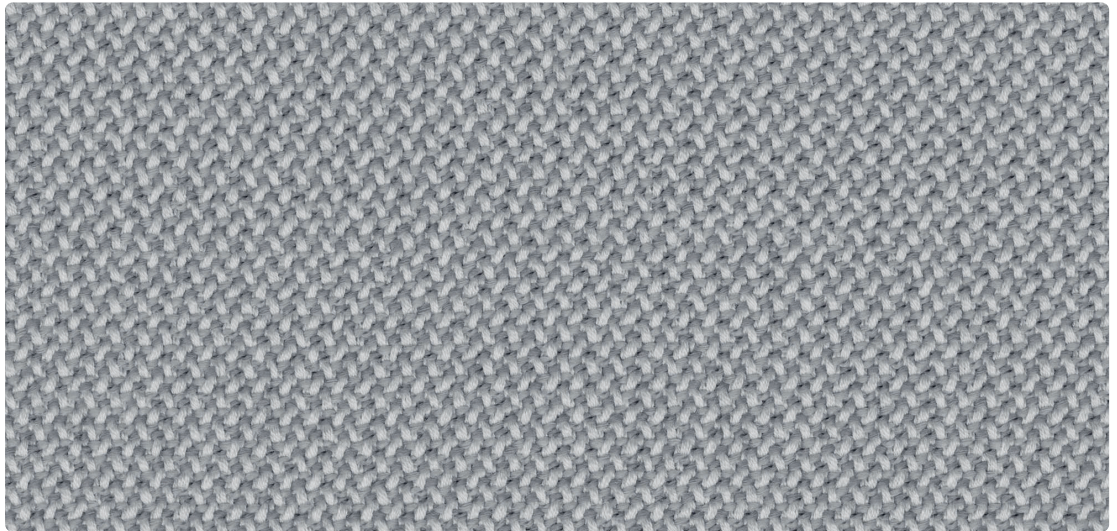
Min 5-8 EN ISO 105-B02

**Abrasion**

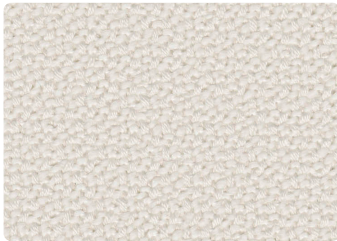
100,000 rubs

**Maintenance**

Dry clean



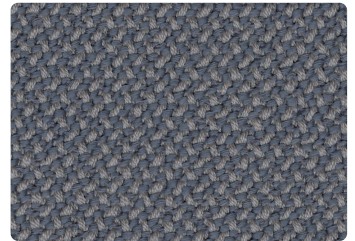
RCR95 Chalk



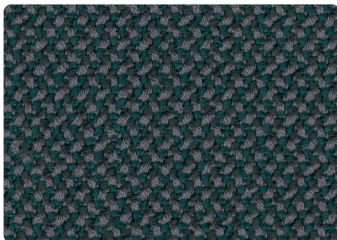
RCR02 Snow



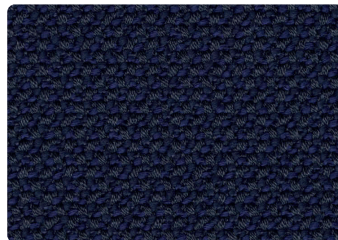
RCR34 Calla



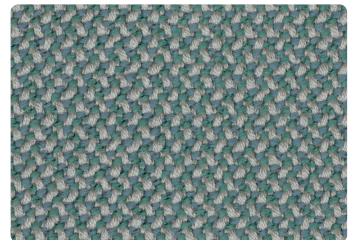
RCR98 Taupe



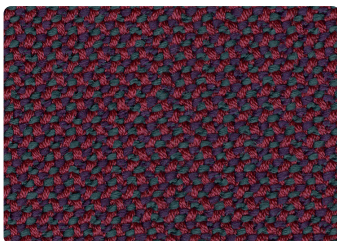
RCR82 Jaspis



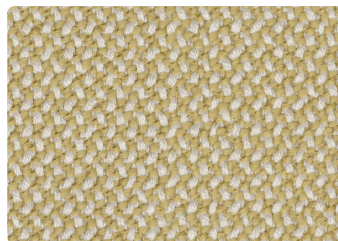
RCR90 Navy



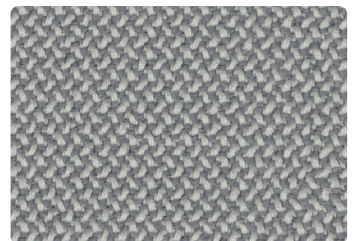
RCR86 Lake



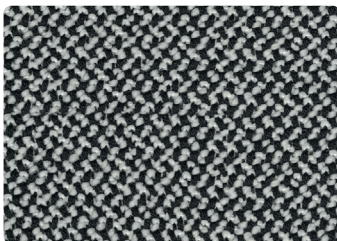
RCR92 Rubin



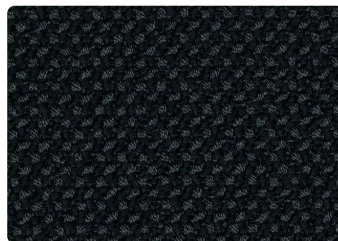
RCR83 Aureo



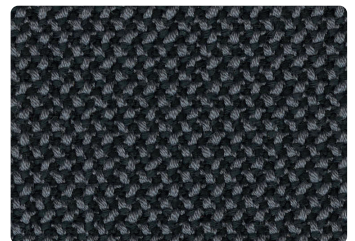
RCR97 Zinn



RCR16 Pepper



RCR08 Black



RCR25 Asphalt